



Step-by-Step with Modern Masters

RECIPE N° 11 | Woven Metal



This treatment creates gorgeous visual texture with an element of lustre and elegance. The finish is versatile and can be created with any color from our [Metallic Plaster](#) line. It can provide a pop of colorful interest for a feature wall or a classic, neutral color and design for an entire area. This tactile finish looks beautiful in any room.

PRODUCTS NEEDED

- Modern Masters [Ice Blue Metallic Plaster](#)
- Modern Masters [White Sand Metallic Plaster](#)
- Benjamin Moore #1634 Santorini Blue in Satin

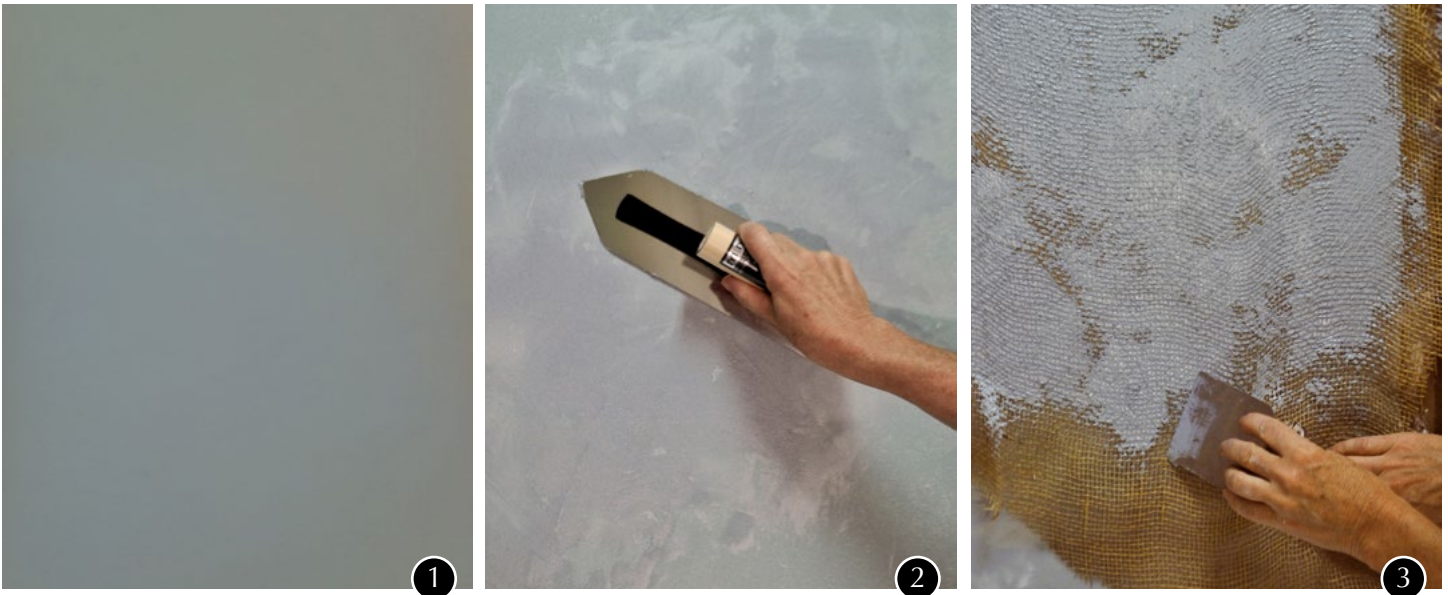
TOOLS NEEDED

- Modern Masters [225mm Japanese Trowel](#)
- 4" Japan Scraper
- Gardener's Burlap (Home Depot)
- Thumb Tacks or Painters Tape
- Rags and Containers



Step-by-Step with Modern Masters

RECIPE N° 11 | Woven Metal



STEP 1: Apply a base coat of Benjamin Moore's Santorini Blue to the surface and allow to dry approximately 2 hours.

STEP 2: Using a Japanese Trowel, apply a layer of Metallic Plaster Ice Blue to the surface creating an overall smooth but random pattern. Let dry. Apply a second layer of Ice Blue using the same. Vary slightly thick and thin areas while leaving a little of the base color peeking through.

STEP 3: When the second layer is dry "loosely" drape the gardener's burlap over the surface. Mix 1 part White Sand Metallic Plaster with 2 parts Ice Blue Metallic Plaster. Use a Japan scraper to apply mixture over the open weave of the gardener's burlap. Leave approximately 35% open space to create interest and movement. Pull burlap off while wet and let dry.

TIP: You can use painters tape or thumb tacks to keep the burlap in place. Avoid the urge to pull the burlap straight! Leave it loose and flowing as you prepare to trowel over it.

You are done!